

Geostatistical techniques applied to mapping limnological variables and quantify the uncertainty associated with estimates

Técnicas geoestatísticas aplicadas ao mapeamento de variáveis limnológicas e quantificação da incerteza associada às estimativas

Cristiano Cigagna¹, Daniel Marcos Bonotto¹, José Ricardo Sturaro² and

Antonio Fernando Monteiro Camargo³

¹Departamento de Petrologia e Metalogenia, Instituto de Geociências e Ciências Exatas, Universidade Estadual Paulista – UNESP, Av. 24-A, 1515, Bela Vista, CEP 13506-900, Rio Claro, SP, Brasil
e-mails: criscigagna@yahoo.it; danielbonotto@yahoo.com.br

²Departamento de Geologia Aplicada, Instituto de Geociências e Ciências Exatas, Universidade Estadual Paulista – UNESP, Av. 24-A, 1515, Bela Vista, CEP 13506-900, Rio Claro, SP, Brasil
e-mail: sturaro@rc.unesp.br

³Departamento de Ecologia, Instituto de Biociências, Universidade Estadual Paulista – UNESP, Av. 24-A, 1515, Bela Vista, CEP 13506-900, Rio Claro, SP, Brasil
e-mail: antoniofmcamargo@gmail.com

Abstract: Aim: This study aimed to map the concentrations of limnological variables in a reservoir employing semivariogram geostatistical techniques and Kriging estimates for unsampled locations, as well as the uncertainty calculation associated with the estimates. **Methods:** We established twenty-seven points distributed in a regular mesh for sampling. Then it was determined the concentrations of chlorophyll-*a*, total nitrogen and total phosphorus. Subsequently, a spatial variability analysis was performed and the semivariogram function was modeled for all variables and the variographic mathematical models were established. The main geostatistical estimation technique was the ordinary Kriging. The work was developed with the estimate of a heavy grid points for each variables that formed the basis of the interpolated maps. **Results:** Through the semivariogram analysis was possible to identify the random component as not significant for the estimation process of chlorophyll-*a*, and as significant for total nitrogen and total phosphorus. Geostatistical maps were produced from the Kriging for each variable and the respective standard deviations of the estimates calculated. These measurements allowed us to map the concentrations of limnological variables throughout the reservoir. The calculation of standard deviations provided the quality of the estimates and, consequently, the reliability of the final product. **Conclusions:** The use of the Kriging statistical technique to estimate heavy mesh points associated with the error dispersion (standard deviation of the estimate), made it possible to make quality and reliable maps of the estimated variables. Concentrations of limnological variables in general were higher in the lacustrine zone and decreased towards the riverine zone. The chlorophyll-*a* and total nitrogen correlated comparing the grid generated by Kriging. Although the use of Kriging is more laborious compared to other interpolation methods, this technique is distinguished for its ability to minimize the variance of the estimate and provide the estimated value of the degree of uncertainty.

Keywords: geostatistics; Kriging; standard deviation of the estimate; reservoirs; limnology.

Resumo: Objetivo: Este estudo teve como objetivo mapear as concentrações de variáveis limnológicas em um reservatório empregando-se as técnicas geoestatísticas de variografia e krigagem para as estimativas em locais não amostrados, assim como, o cálculo da incerteza associada aos valores estimados. **Métodos:** Foram estabelecidos vinte e sete pontos distribuídos em uma malha regular para a amostragem. Em seguida foram determinadas as concentrações de clorofila-*a*, nitrogênio total e fósforo total. Subsequentemente, realizou-se uma análise de variabilidade espacial e a função semivariograma foi modelada para todas as variáveis e os modelos matemáticos variográficos estabelecidos. A técnica de estimativa geoestatística empregada foi a krigagem ordinária.

O trabalho se desenvolveu com a estimativa de uma malha densa de pontos (*grid*) para cada uma das variáveis que constituiu a base dos mapas interpolados. **Resultados:** Por meio da análise variográfica foi possível identificar a componente aleatória como pequena para o processo de estimativa da clorofila-*a* e como expressiva para o nitrogênio total e fósforo total. Foram elaborados os mapas geoestatísticos a partir da krigagem para cada variável e calculados os respectivos desvios padrão das estimativas. Essas medidas permitiram mapear as concentrações das variáveis limnológicas por todo o reservatório. O cálculo dos desvios padrão forneceu a qualidade das estimativas e, conseqüentemente, a confiabilidade do produto final. **Conclusões:** A utilização da técnica Geoestatística de krigagem na estimativa de malhas densas, associada à dispersão da incerteza (desvio padrão da estimativa), possibilitou a confecção de mapas qualificados e confiáveis das variáveis estimadas. As concentrações das variáveis limnológicas de um modo geral foram mais elevadas na região lacustre e diminuíram em direção ao tributário. A clorofila-*a* e o nitrogênio total apresentaram correlação comparando-se as malhas geradas pela krigagem. Embora o emprego da krigagem seja mais trabalhoso, quando comparado com outros métodos de interpolação, essa técnica destaca-se por sua capacidade de minimizar a variância da estimativa e por fornecer o grau de incerteza do valor estimado.

Palavras-chave: geoestatística; krigagem; desvio padrão da krigagem; reservatórios; limnologia.

1. Introduction

The theory of regionalized variables, also known as Geostatistics, was developed based on the description, modeling, and the use of spatial continuity of regionalized variables. According to this theory, the variables representing a regionalized phenomenon have a casual variation in space, however, as will the same approach, there is the existence of a correlation that reflects the structure of regionalized phenomenon (Huijbregts, 1975). The application of this theory had its development based on several studies of empirical conducted by researchers in the gold mines in South Africa in the 50's.

One notable difference between Classical Statistics and the Geostatistics is that the first requires independent sample values spatially, while the second requires values of the samples correlated (dependent) for a certain distance in space. According to Matheron (1963), the starting point for the development of Geostatistics was due to the inability of Classical Statistics to consider the spatial aspect of a natural phenomenon, which is an important feature for assessing the physical environment. For this feature, the Geostatistics has many applications in Geosciences, mainly to describe and model spatial variability patterns (semivariogram), predict values in unsampled locations (Kriging), get the uncertainty of estimates for unsampled locations (standard deviation Kriging) and optimizing sampling meshes.

The essential quality of an estimate is simply not to estimate a value of a point or a block, but also associate with this assessment a sense of a quality

estimate, measuring the existing uncertainty, i.e., it is necessary to know how far the value assigned can be of real value. Geostatistics, through the semivariogram and Kriging, provides an estimate of the point or block and, together, a valuable measure of accuracy of the estimate, i.e., the standard deviation of the estimated value (Andriotti, 2003).

The use of models and the generation of sample meshes, followed by interpolation, have been consolidated over time in limnology studies.

Geostatistical techniques for estimates in unsampled locations have been applied, for example, in evaluating the spatial distribution of fish in lakes (Bezerra-Neto et al., 2013), macrophyte geographical distribution modeling in river basins (Cancian, 2012), spatial distribution of phytoplankton (Campos, 2010), spatial structuring of submerged aquatic vegetation in an estuarine habitat (Burgos-León et al., 2013), bathymetric and morphometric studies in lotic (Zani et al., 2008) and lentic environments (Lopes et al., 2013; Cigagna et al., 2014; Furlan et al., 2015), cyanobacteria mapping (Utsumi et al., 2015), among others. These studies have at least one thing in common, that is, they attempt to make great predictions of the variable under study in unsampled locations.

To predict a variable of a point or block the uncertainty associated with the estimate should also be considered. In this case, the traditional methods of evaluation such as radial functions, spline, polynomial and inverse distance, among others, are limited so as to calculate the uncertainty associated with the estimate. Statistical methods can evaluate the accuracy of the estimate, however, these methods

over-estimate this error, since it does not take into account the spatial correlations (Guerra, 1988).

Among the interpolation methods currently used, Kriging's geostatistical technique constitutes the best unbiased linear estimator (Isaaks & Srivastava, 1989), considering the use of the semivariogram function, which allows us to model the variability of the variable studied in space. Such a function seeks to capture the spatial correlation that will be used to assign a weight to the samples surrounding the estimates. In general the semivariogram is an increasing function of distance (h), since the values taken from two different points are averaged, the farther away they are the more different they are from each other. Thus the semivariogram gives precise meaning to the traditional notion of the influence zone of the samples (Guerra, 1988).

The semivariogram function is a basic technique for geostatistical estimates because it works directly with the spatial variation, i.e., it is a measurement that expresses the spatial correlation of the variable. This measurement constitutes the semivariances differences in experimental values situated at regular intervals. In stationary conditions, the expected average value is constant, which reduces the semivariogram to the quadratic mean of the differences between the experimental values (Isaaks & Srivastava, 1989).

According to Guerra (1988), although it exists theoretically, a $\gamma(h)$ trend indefinitely to (h) occurs frequently in practice that from a certain distance the samples have some influence over each other, as can be observed in Figure 1. The parameter (a) is called range and corresponds to the idea of influence of a sample area, i.e., the structured component. It marks the distance from which a point of the variable under study has no more influence on the neighboring point. It represents the beginning of a pure randomness zone.

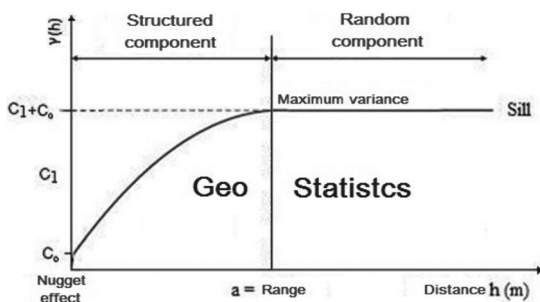


Figure 1. A semivariogram and its parameters: a (amplitude or range), C_1 (variance), C_0 (nugget effect) and sill ($= C_1 + C_0$), (Guerra, 1988).

When a semivariogram in different directions exhibits the same behavior, it's said to be an isotropic variable; otherwise, it is said there is anisotropy. An anisotropy corresponds to the existence of privileged directions that conditioned the genesis of the natural phenomenon under study. In the case of isotropic $\gamma(h)$ does not depend on the direction in which one studies the phenomenon, because their behavior is the same in any of them. In the anisotropic case, $\gamma(h)$ will also influence the direction (h) and not only in the module itself (Andriotti, 2003).

For obtaining a semivariogram, it is assumed that the regionalized variable has a stationary behavior, that is, the expected mean values, as well as its spatial covariance, is statistically the same for a given area. It is assumed, therefore, that the values within the area of interest have no tendency that might affect the results (Landim et al., 2002).

The geostatistical technique of Kriging comprises a set of technical estimates and prediction of surfaces based on semivariogram modeling of spatial correlation structure. What distinguishes Kriging from other interpolation methods is the estimation of a spatial covariance matrix that determines the weights assigned to different samples, treatment of data redundancy, the neighborhood being considered in the inferential process and the uncertainty associated with the estimated value (Camargo et al., 2004). Hence the difference is the way the weights are assigned to different samples. In the case of interpolation by a simple average, for example, the weights are all equal to $1/N$ (N = number of samples); at the interpolation based on the inverse square of the distance, the weights are defined as the inverse square of the distance separating the interpolated value of the values observed.

In Kriging, the procedure is similar to the interpolation by the weighted moving average, except that here the weights are determined from a spatial analysis based on semivariogram, which brings measurement differences in variance as a function of the distances between observed points or "lag". The Kriging uses these parameters as input terms in a system of linear equations to make predictions.

The Kriging geostatistical technique stands out for its ability to minimize the variance of the error between the sample and the estimated point and allows the estimation measurement accuracy, that is, the uncertainty associated (Goovaerts, 1997). Minimizing the variance of the estimation, in

relation to the condition of non-bias is a question that requires, for its solution, using the technique of Lagrange multipliers. Theoretical considerations show that the optimum weights are found by solving a set of linear equations, whose coefficients are a function of the semivariogram and location of the samples in relation to the point or block to be estimated (Andriotti, 2003).

In this study, the Kriging geostatistical technique was applied in the estimation of limnological variables in a reservoir using twenty-seven sampling points distributed in a regular mesh. The objective was to map the dispersion of limnological variables starting with a detailed semivariogram analysis that supported the estimates and, consequently, enabled us to calculate the respective standard deviations of the estimated values.

2. Material and Methods

2.1. Study area

The central reservoir of FEENA (“Edmundo Navarro de Andrade” State Forest) is situated in a Sustainable Use Conservation Unit of the State of São Paulo, located in the southeastern region of Brazil, at the eastern end of the city of Rio Claro,

SP (Figure 2). The quadrant with UTM (Universal Transverse Mercator) coordinates covering the study area are: 240258-240442E and 7519137-7519380S, 23K zone, datum SIRGAS/2000.

The climate of the area according to the Köppen classification is tropical with two distinct seasons - Cwa, i.e., w: dry in winter, a: hottest month with temperatures above 22 °C.

As for rainfall, there is a dry period between April and September, with average rainfall from 34.2 to 72.3 mm, and a rainy period, from October to March, with the average ranging from 119.3 mm to 338.6 mm. The annual average rainfall is 1366 mm.

The study area is within the Ribeirão Claro catchment which, in turn, is part of the watershed of the Corumbataí River. The main drainage system in the region is represented by the Corumbataí River and its tributaries: Ribeirão Claro, Cabeça and Passa Cinco. Such rivers’ source is on the slopes of the Cuesta and they flow south, emptying into the Piracicaba River which runs westward, and takes its waters to the Tietê River (Cottas, 1983). The main tributaries of the Ribeirão Claro that cross FEENA are the Lavapés, Santo Antônio

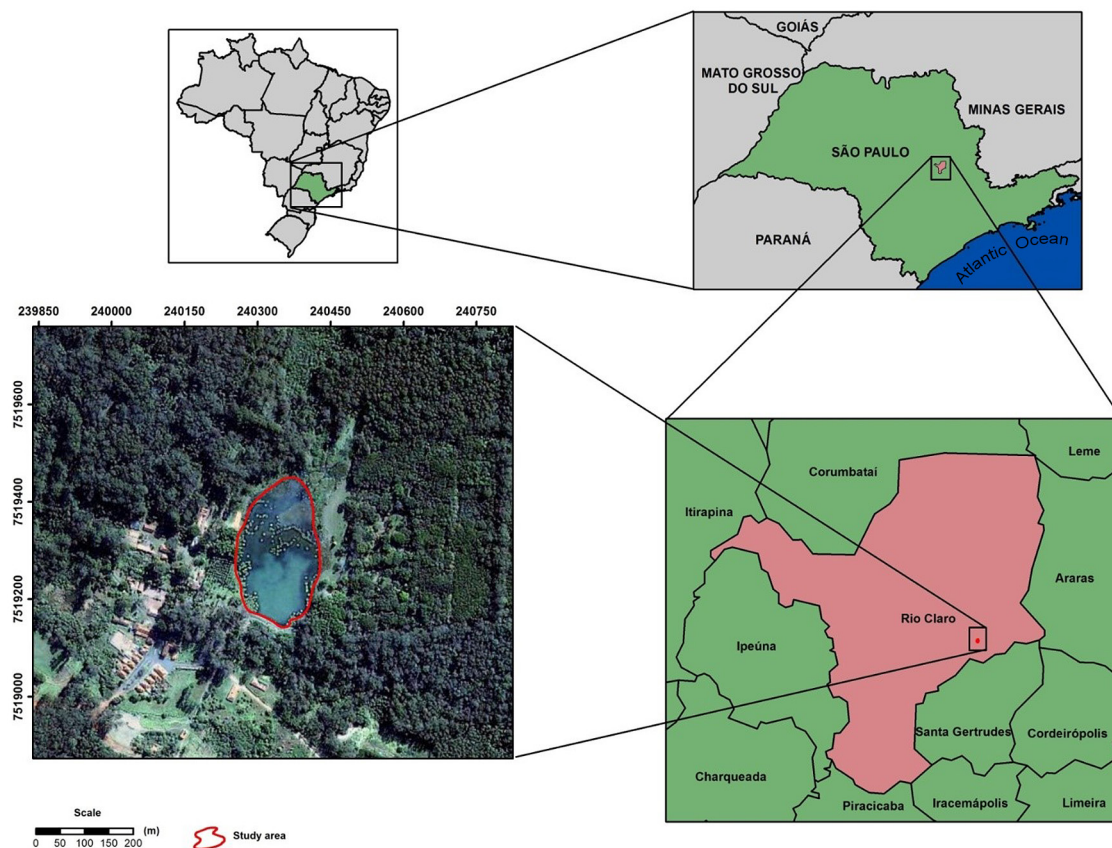


Figure 2. Study area location map.

and Ibitinga streams. The reservoir is a result of the damming of the Ibitinga stream waters in the final portion of its course, within the boundaries of FEENA. This affluent feeds the reservoir at the north end, the spillway is south, draining the water into the Santo Antônio stream, left tributary of the Ribeirão Claro. The latter is responsible for part of the water supply for the city of Rio Claro. Some principal morphometric parameters of the reservoir are presented in Table 1.

2.2. Data acquisition

The authorization for the development of this research project was granted by the Forestry Institute, an agency of the Environmental

Table 1. Morphometric parameters of the FEENA reservoir (Cigagna et al., 2014).

Morphometric parameters	
Area (A)	25.866 m ²
Volume (V)	22.251 m ³
Maximum depth (Z _{max})	2.16 m
Perimeter (m)	645 m
Maximum width (La _{max})	159 m
Maximum length (L _{max})	268 m
Average depth (Z _{med})	0.86 m
Relative depth (Z _r)	1.19%
Perimeter development (D _p)	1.12
Volume development (D _v)	1.19

Department of the State of São Paulo (SMA Case N°. 260108-006744/2012).

Twenty-seven sampling points were established and distributed in a regular mesh (Figure 3). The sampling was conducted in September 2012 (end of the dry season). Each point was georeferenced and identified using a Garmin GPS12. The UTM projection system and the datum SIRGAS/2000 were adopted.

A bottle of the Van Dorn horizontal type, Wildco make, model 1120, with 2.2 liter storage capacity was used for water sampling. Water samples were placed in frosted plastic bottles and stored in a thermal insulated box with ice. They were then transported to the limnology laboratory at the Ecology Department of the Institute of Biosciences of the Universidade Estadual Paulista/UNESP, Rio Claro Campus, where chlorophyll-*a*, total phosphorus and total nitrogen calculations were made according to the methods described by (Lorenzen, 1967), (Golterman et al., 1978) and (Mackereth et al., 1978), respectively.

2.3. Semivariogram function

In the next stage, we carried out a detailed analysis of the spatial variability of each limnological variable through semivariograms.

Sampling points	UTM coordinates	
	Z. 23k, datum SIRGAS/2000	
	X	Y
P1	240341	7519182
P2	240383	7519171
P3	240324	7519206
P4	240353	7519202
P5	240379	7519197
P6	240415	7519193
P7	240314	7519229
P8	240351	7519222
P9	240388	7519216
P10	240419	7519212
P11	240311	7519252
P12	240344	7519244
P13	240386	7519238
P14	240420	7519232
P15	240306	7519272
P16	240344	7519267
P17	240384	7519261
P18	240425	7519252
P19	240311	7519292
P20	240346	7519287
P21	240424	7519272
P22	240426	7519293
P23	240316	7519311
P24	240343	7519304
P25	240332	7519335
P26	240335	7519358
P27	240355	7519366

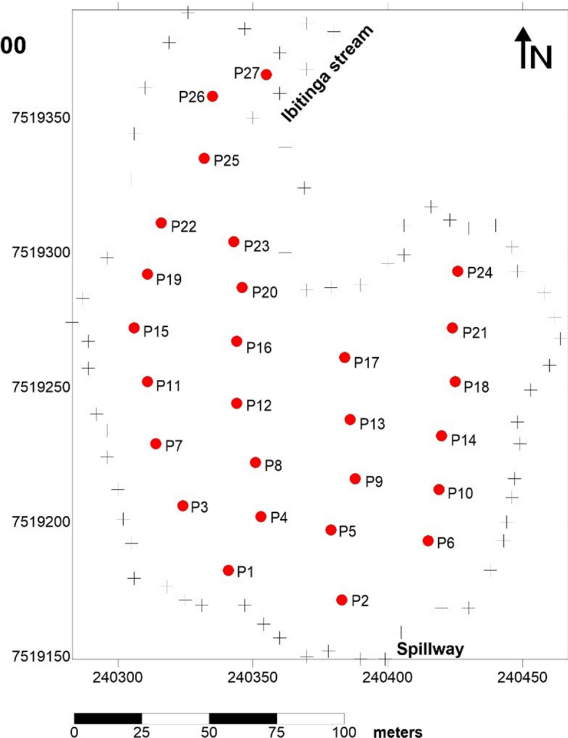


Figure 3. Sampling points distributed in a regular mesh in the FEENA reservoir.

For spatial variability analysis of limnological data, we used the VARIOWIN[®] 2.21 software authored by (Pannatier, 1996). The VARIOWIN[®] consists of three modules (Prevar2D, Vario2D, and Model). With Prevar2D a file was created with extension PCF (Pair Comparison File) containing all possible distances between the observation data points. Then, we calculated a semivariogram with an angular tolerance of 45° to each variable using the Vario2D. Finally, the Model was used in the modeling of semivariograms which were adjusted with the spherical model. The spherical variographic models refer to transitional phenomena, characterized by semivariograms whose upward curve tendency rise plateaus at $C_0 + C_1$.

The anisotropy was also modeled, since the limnological data showed principal directions of 0° and 90° which, respectively represent the directions of greater and lesser correlation between the data. The final product modeling constitutes the variographic parameters nugget effect, range, sill and anisotropy that describe the spatial variability of natural phenomena. These parameters supported the Kriging performed in the next step.

2.4. Ordinary Kriging

Kriging geostatistical technique was employed to estimate a heavy and regular grid of values using the Surfer10[®] software. Variographic parameters of the random component (nugget effect), structured component (sill), the semivariogram range (a) and anisotropy, obtained in the modeling of semivariograms were used. The predicted surface was computed to satisfy the conditions of minimal tendency and minimum variance and in this way to obtaining by means of a Surfer10[®] subroutine, a measure of estimate accuracy, i.e., the standard deviation.

3. Results and Discussion

3.1. Variographic parameters

To check the significance of the variability of the nugget effect we calculated the ratio between C_0 and C_1 , which expresses the degree of randomness of the variable (Table 2).

Table 2. Variographic parameters of chlorophyll-*a* (Cl-*a*), total nitrogen (TN) and total phosphorus (TP).

Semivariogram	Cl-a	TN	TP
Type	Spherical	Spherical	Spherical
C_0	0.364	0.00376	837
C_1	2.964	0.00688	9.021
a (m)	98.8	35.1	111.8

The ratio of both parameters C_0 and C_1 allows us to classify the random component as not significant for the estimation process of chlorophyll-*a* and as significant for total nitrogen and total phosphorus. According to Guerra (1988), the combination of these two parameters in a single parameter, which is the relative nugget effect, it is a convenient way to express the relative randomness of regionalization.

The distance (h) wherein the variables curve stabilized on semivariograms (Figure 4), i.e., the range (a), was 82 meters on average. These parameters reflect the distance to where there is a spatial dependence of the variable, that is, the distance away from the study point which has no more influence on the neighboring point. This distance (a) delimiting the zone of influence from which the variability is maximum.

3.2. Geostatistical maps and standard deviations of the estimates

Through the geostatistical technique of semivariogram analysis and Kriging, it was possible to map the variability of limnological variables in the reservoir, resulting in the geostatistical maps as a finished product and their respective standard errors of the estimates. Obtaining the minimum variance of the estimate for the situation we guaranteed the best possible advantage of limnological data, i.e., it provides greater security to have the most accurate assessment possible with the twenty-seven sampling points available.

The chlorophyll-*a* (Figure 5a) has a higher concentration in the central zone of the reservoir with a maximum level of 6 $\mu\text{g.L}^{-1}$. The lowest values were found in the riverine zone (0.60 $\mu\text{g.L}^{-1}$), close to the Ibitinga stream.

The total nitrogen had little variation, with levels between 0.23 and 0.24 mg.L^{-1} (Figure 6a). It was observed that, like chlorophyll-*a*, the highest values were located in the central zone and showed a decrease in the riverine zone.

The highest concentrations of total phosphorus occurred in some places the reservoir shore, especially in the western shore, and smaller in the central zone (Figure 7a). The highest level was 170 $\mu\text{g.L}^{-1}$ and the minimum 10 $\mu\text{g.L}^{-1}$.

Usually all the maps show a longitudinal gradient to the concentrations of the limnological variables. The riverine zone that's where lower concentrations were shown. The highest levels were observed in the central zone and in the lacustrine zone, where the reservoir spillway is located.

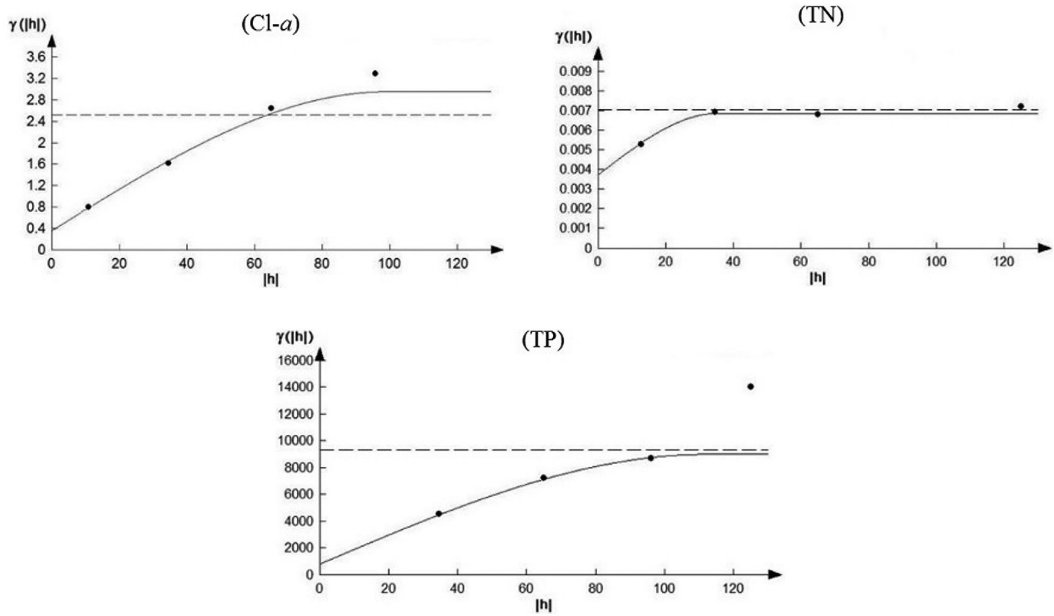


Figure 4. Semivariograms of chlorophyll-*a* (CI-*a*), total nitrogen (TN) and total phosphorus (TP).

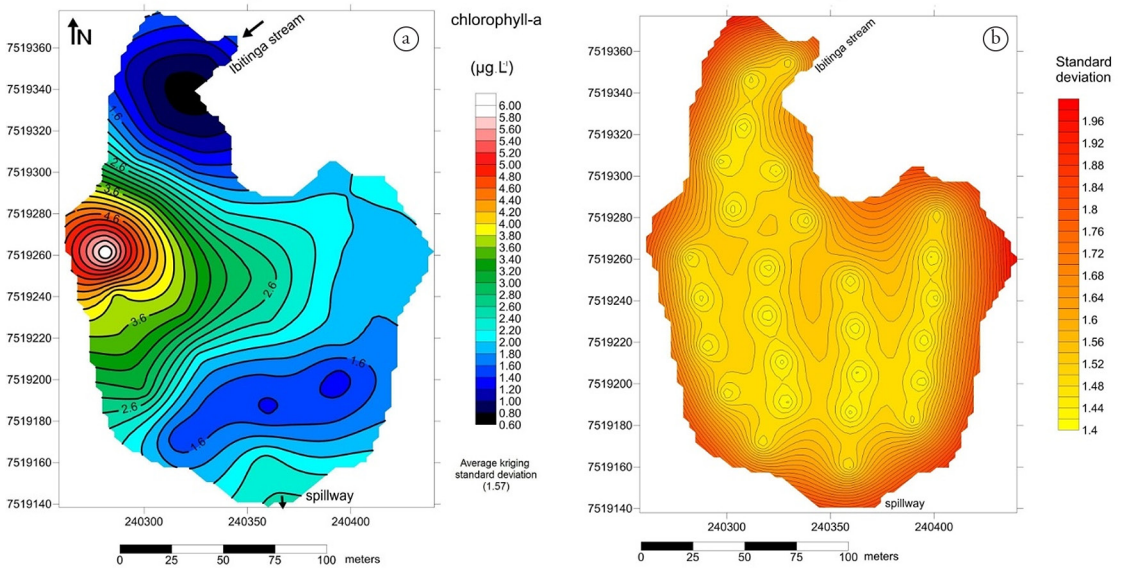


Figure 5. Estimates (a) and standard deviations (b) of the chlorophyll-*a* concentrations.

Among the variables compared here, geostatistical maps of chlorophyll-*a* and total nitrogen showed the higher spatial correlation. Pearson's linear correlation coefficient between the grids generated by Kriging indicated 0.38 between chlorophyll-*a* and total nitrogen. This correlation using the grid generated by Kriging can be useful in characterizing the limiting nutrient in aquatic systems. Chlorophyll-*a* mapping allows a quantitative biomass assessment present in the environment, which can be used as a trophic condition indicator (Dodds et al., 1998).

One of the advantages of the Kriging interpolation technique is that each estimate is accompanied by a corresponding Kriging standard deviation (Figures 5b, 6b and 7b). Thus, for any values of a contour map, a reliability map can be produced. Therefore, if a standard deviation is greater than the standard deviation of the initial sample, the estimate has a significant degree of randomness (Clark, 1979).

The average values of standard deviations calculated for each variable were 1.57 for chlorophyll-*a*, 0.10 for total nitrogen, and 55.80 for

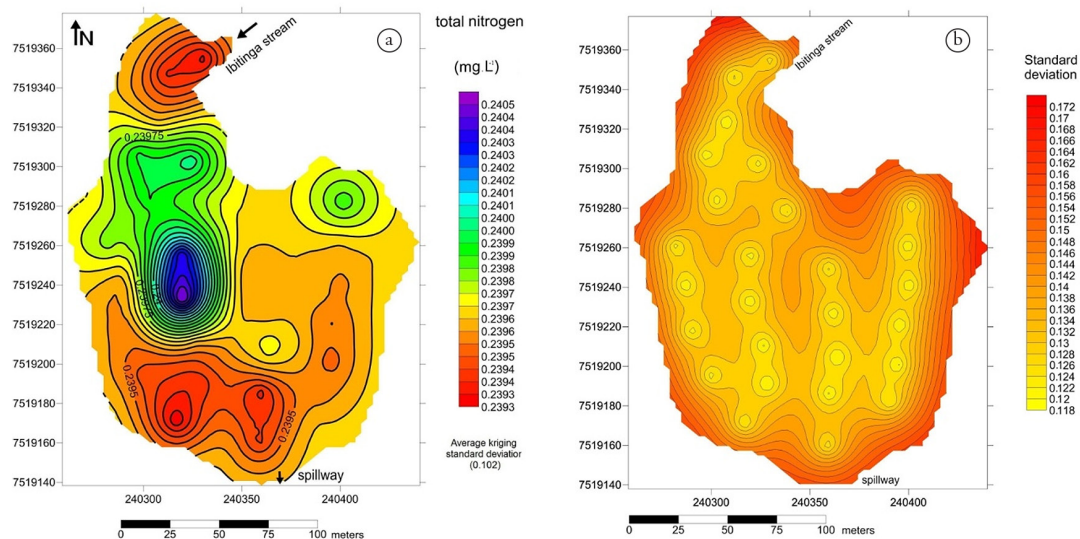


Figure 6. Estimates (a) and standard deviations (b) of total nitrogen concentrations.

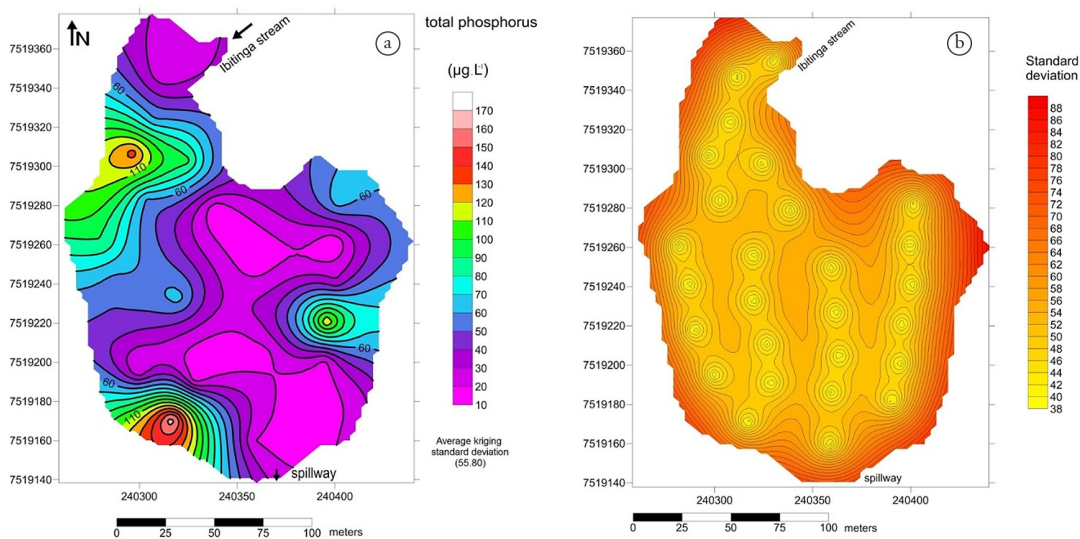


Figure 7. Estimates (a) and standard deviations (b) of total phosphorus concentrations.

total phosphorus, respectively. Due to the small number of sampling points available and the variability of the natural phenomena expressed by semivariograms, a relatively high variance is to be expected. However, Kriging allowed the minimum variance of the uncertainty to the available data.

Considering that the mesh used in the Kriging was the same for all limnological variables and the fact that the uncertainty estimated is linked directly to the configuration of the sampling points, the standard deviation maps showed little visual difference between them in general appearance. As a rule, the map of the standard deviations shows a configuration known as “bull eyes”, i.e., at the sampling site where the points are more numerous,

the isovalue curves tend to be concentric towards the determined value for the variable, therefore the error dispersion is greater. Moreover, the chart indicates that the uncertainty of the estimate increases as it moves away from the observation points towards the edges of the reservoir, where the sampling mesh is smaller. In this sense, the standard deviation map can still provide subsidies for the most appropriate establishment of the sampling mesh.

4. Conclusion

All maps show a longitudinal gradient to the concentrations of the limnological variables. The levels were higher in the lacustrine zone and decreased towards the riverine zone. The chlorophyll-*a*

and total nitrogen correlate comparing the grids generated by Kriging. The use of Kriging starting with a detailed spatial analysis, based on semivariograms, enabled us to perform more accurate estimates of the dispersion of the variables in the reservoir, in this sense this technique considers the random component, structured component, the influence radius of sample points and the anisotropic aspect of the system. The estimate of heavy meshes, associated with the error dispersion, allowed us to produce qualified and reliable maps of the estimated limnological variables concentrations. Although the use of Kriging is more complex and laborious, compared to other interpolation methods, this technique is distinguished for its ability to minimize the variance of the estimate and provide the estimated value of the degree of uncertainty.

Acknowledgements

We thank Brice Hoffer for their collaboration during the fieldwork and laboratory analysis. We also thank Leo Keiper for reviewing the English version of the manuscript.

References

- ANDRIOTTI, J.L.S. *Fundamentos de Estatística e Geostatística*. São Leopoldo: Editora Unisinos, 2003, 165 p.
- BEZERRA-NETO, J.F., BRIGHENTI, L.S. and PINTO-COELHO, R.M. Aplicação do método hidroacústico na avaliação rápida da distribuição espacial de peixes em um Lago Brasileiro - Lagoa Santa, Minas Gerais. *Acta Limnológica Brasiliensia*, 2013, 25(1), 91-98. <http://dx.doi.org/10.1590/S2179-975X2013000100010>.
- BURGOS-LEÓN, A.M., VALDÉS, D., VEGA, M.E. and DEFEO, O. Spatial structuring of submerged aquatic vegetation in an estuarine habitat of the Gulf of Mexico. *Journal of the Marine Biological Association of the United Kingdom*, 2013, 93(4), 855-866. <http://dx.doi.org/10.1017/S0025315412000677>.
- CAMARGO, E.C.G., FUCKS, S.D. and CÂMARA, G. Análise espacial de superfícies. In S. DRUCKS, M.S. CARVALHO, G. CÂMARA and A.V.M. MONTEIRO, eds. *Análise espacial de dados geográficos*. Planaltina: EMBRAPA Cerrados, 2004, pp. 79-122.
- CAMPOS, M.O. *Fatores que influenciam a distribuição espacial do fitoplâncton na Lagoa da Pampulha – BH, MG*. [Dissertação de Mestrado]. Belo Horizonte: Programa de Pós-graduação em Saneamento; Meio Ambiente e Recursos Hídricos; Universidade Federal de Minas Gerais, 2010.
- CANCIAN, L.F. *Modelagem de distribuição geográfica potencial de macrófitas aquáticas em bacias hidrográficas* [online]. [Tese de Doutorado]. Rio Claro: Instituto de Biociências de Rio Claro; Universidade Estadual Paulista, 2012 [viewed 01 Apr. 2016]. Available from: <http://hdl.handle.net/11449/100619>
- CIGAGNA, C., BONOTTO, D.M. and STURARO, J.R. Batimetria e Estudo de Parâmetros Morfométricos do Reservatório da Floresta Estadual “Edmundo Navarro de Andrade” (FEENA) *Rio Claro/SP*. São Paulo, UNESP. *Revista Geociências*, 2014, 33(4), 720-732.
- CLARK, I. *Practical Geostatistics* [online]. 1979 [viewed 01 Apr. 2016]. Available from: <http://www.krigeing.com/PG1979/>
- COTTAS, L.R. *Estudos geológico-tectônicos aplicados ao planejamento urbano de Rio Claro-SP*. [Tese de Doutorado]. São Paulo: Instituto de Geociências; Universidade de São Paulo, 1983. 2 vols.
- DODDS, W.K., JONES, J.R. and WELCH, E.B. Suggested classification of stream trophic state: distributions of temperate stream types by chlorophyll, total nitrogen, and phosphorus. *Water Research*, 1998, 32(5), 1455-1462. [http://dx.doi.org/10.1016/S0043-1354\(97\)00370-9](http://dx.doi.org/10.1016/S0043-1354(97)00370-9).
- FURLAN, J.Â., TARTARI, R., SILVA, V.V., ANJOS, M.R. and NEVES, G.P. Estudo Morfométrico da Lagoa Paraíso, Sul do Estado do Amazonas, Brasil. *Instituto Biológico, São Paulo*, 2015, 77(1), 11-16.
- GOLTERMAN, H.L., CLYMO, R.S. and OHNSTAD, M.A.M. *Methods for physical and chemical analysis of freshwaters*. Oxford: Blackwell Scientific Publications, 1978, 213 p. [Handbook 8, v. I.B.P.].
- GOOVAERTS, P. *Geostatistics for natural resources evaluation*. Ann Arbor: Oxford University Press, 1997, pp. 125-127.
- GUERRA, P.A.G. *Geostatística operacional*. Brasília: Ministério das Minas e Energia, 1988, 145 p.
- HUIJBREGTS, C.J. Regionalized variables and quantitative analysis of spatial data. In J.C. DAVIS and M.J. McCULLAGH, eds. *Display and analysis of spatial data*. New York: John Wiley, 1975, pp. 38-53.
- ISAAKS, E.H. and SRIVASTAVA, R.M. 1989. *Applied geostatistics*. New York: Oxford University Press, 592 p.
- LANDIM, P.M.B., STURARO, J.R. and MONTEIRO, R.C. *Krigagem ordinária para situações com tendência regionalizada*. Rio Claro: UNESP, 2002, 12 p. [Laboratório de Geomatématica, Texto Didático 06].
- LOPES, H. L., RIBEIRO NETO, A. R., and CIRILO, J. A. Modelagem batimétrica no reservatório de sobradinho: I - geração e avaliação de superfícies batimétricas utilizando interpoladores espaciais. *Revista Brasileira de Cartografia*, 2013, (65/5), 907-922.

- LORENZEN, C.J. Determination of chlorophyll and pheo-pigments: spectrophotometric equations. *Limnology and Oceanography*, 1967, 12(2), 343-346. <http://dx.doi.org/10.4319/lo.1967.12.2.0343>.
- MACKERETH, F.J.H., HERON, J. and TALLING, J.F. Water analysis: some revised methods for limnologists. *Freshwater Biology*, 1978, 36, 121.
- MATHERON, G. Principles of geostatistics. *Economic Geology and the Bulletin of the Society of Economic Geologists*, 1963, 58(8), 1246-1266. <http://dx.doi.org/10.2113/gsecongeo.58.8.1246>.
- PANNATIER, Y. *Variowin: software for spatial data analysis in 2d*. New York: Springer-Verlag, 1996, 91 p.
- UTSUMI, A. G., GALO, M. L. B. T. and TACHIBANA, V. M. Mapeamento de cianobactérias por meio da fluorescência da ficocianina e de análise geoestatística. *Revista Brasileira de Engenharia Agrícola e Ambiental*, 2015, 19(3), 273-279.
- ZANI, H., ASSINE, M. L. and SILVA, A. Batimetria fluvial estimada com dados orbitais: estudo de caso no Alto Curso do Rio Paraguai com o sensor aster. *Geociências*, 2008, 27(4), 555-565.

Received: 14 November 2015

Accepted: 30 March 2016